

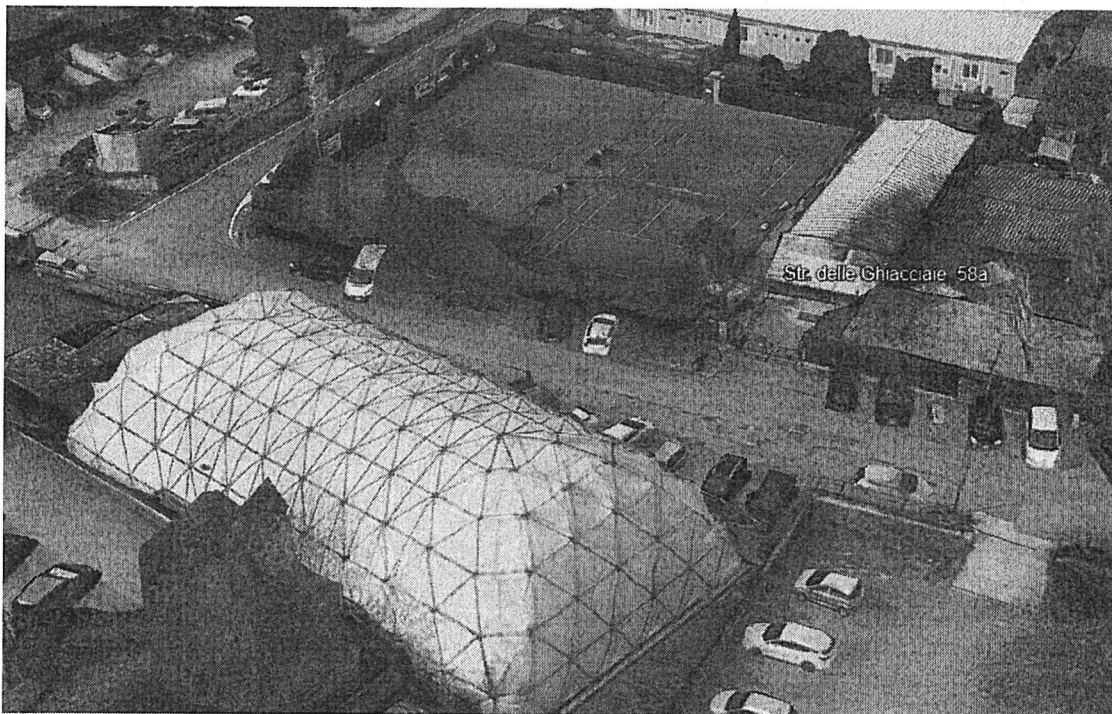


CITTA' DI TORINO

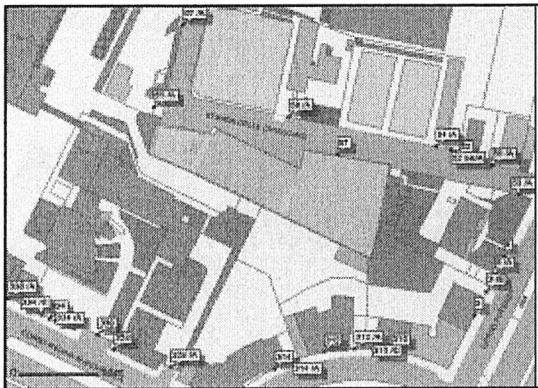
AII. C

DIVISIONE DECENTRAMENTO E COORDINAMENTO CIRCOSCRIZIONI

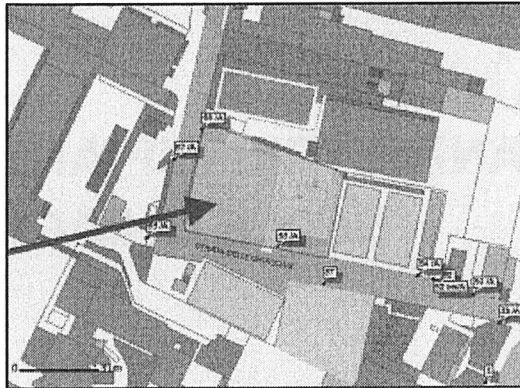
PLANIMETRIE IMPIANTO SPORTIVO STRADA DELLE GHIACCIAIE 57 E 58/A



Vista aerea impianto da Google Earth



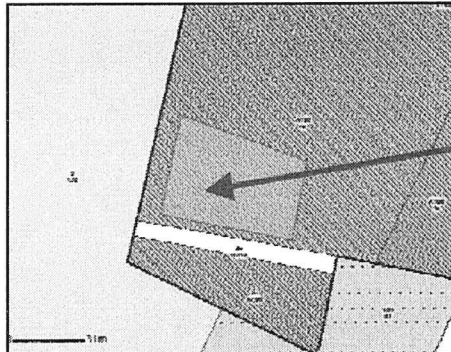
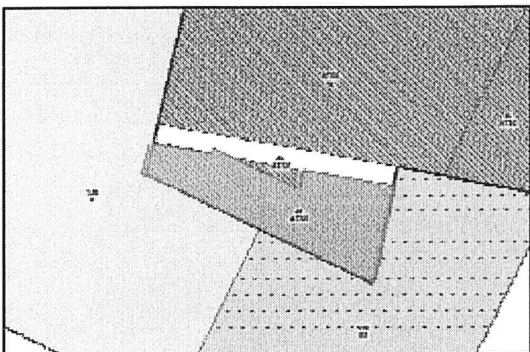
Estratto Cartografico civico 57



Estratto Cartografico civico 58/A



P.R.G.: Tavola 1 Foglio 4B

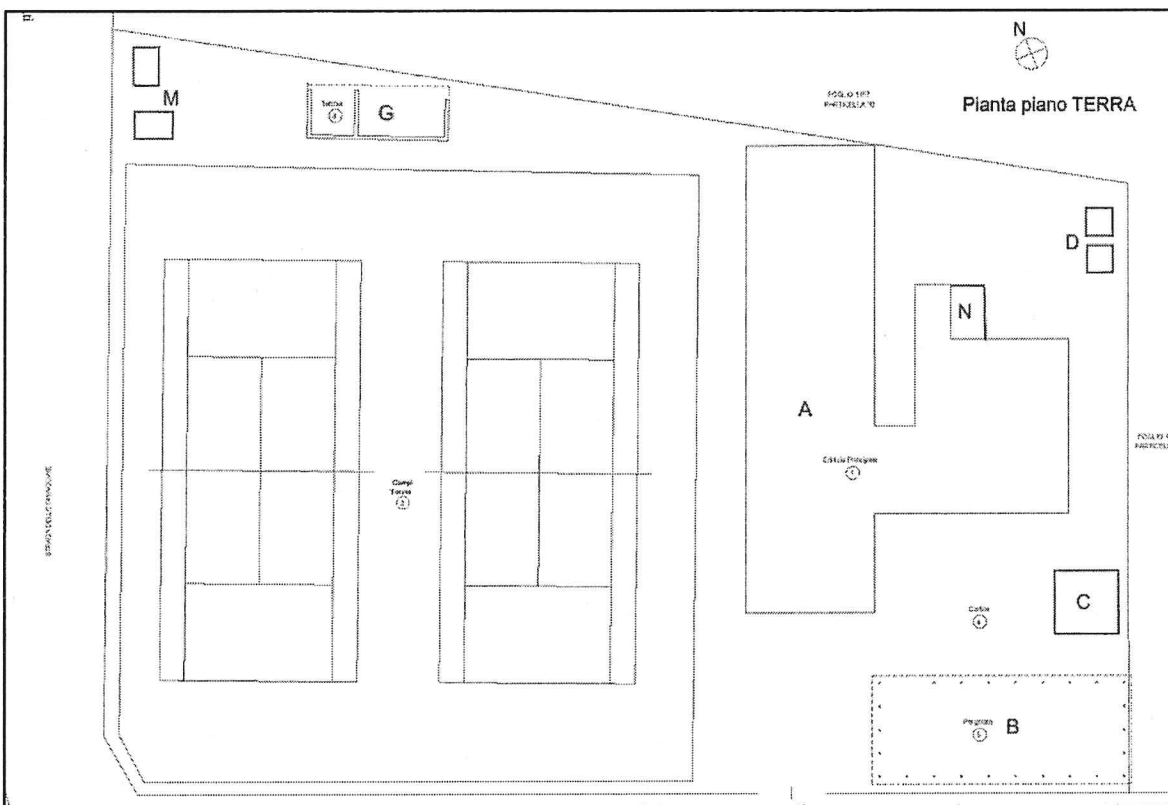


Estratto del tema di Azzonamento PRG

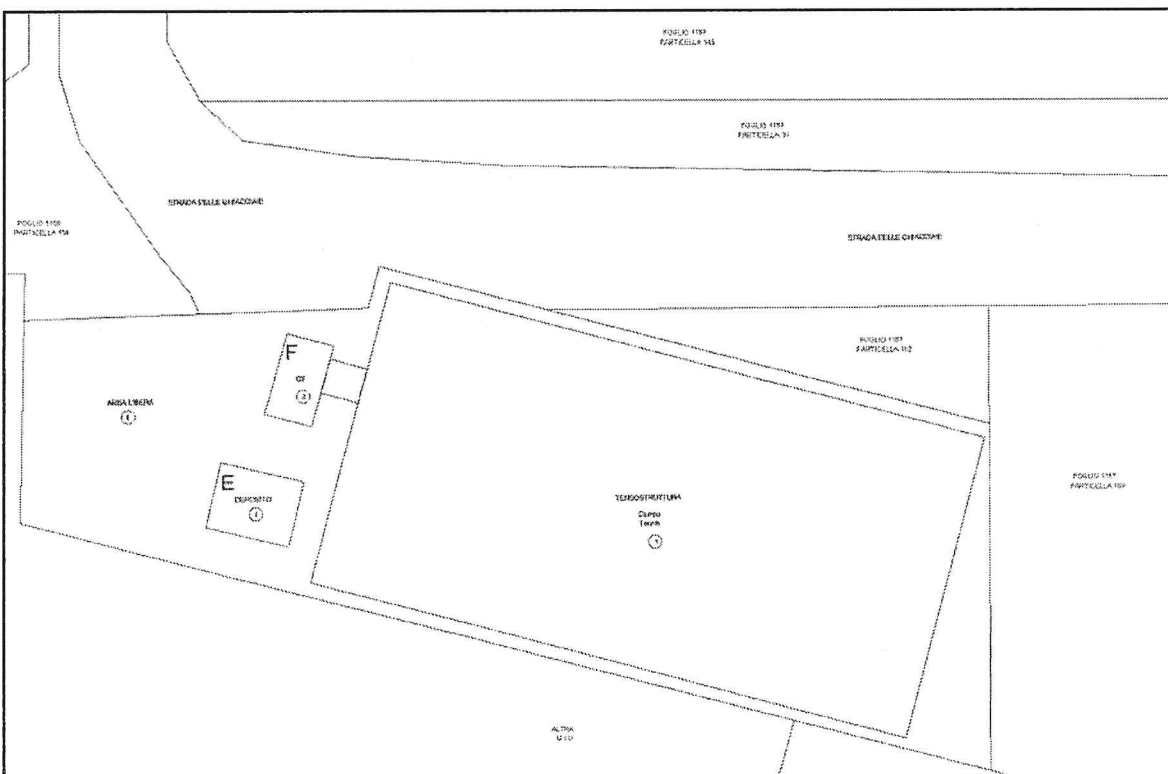


Fotografia aerea dell'impianto

Estratto carta tecnica con distribuzione strutture



Estratto carta tecnica con distribuzione strutture civico 58/A

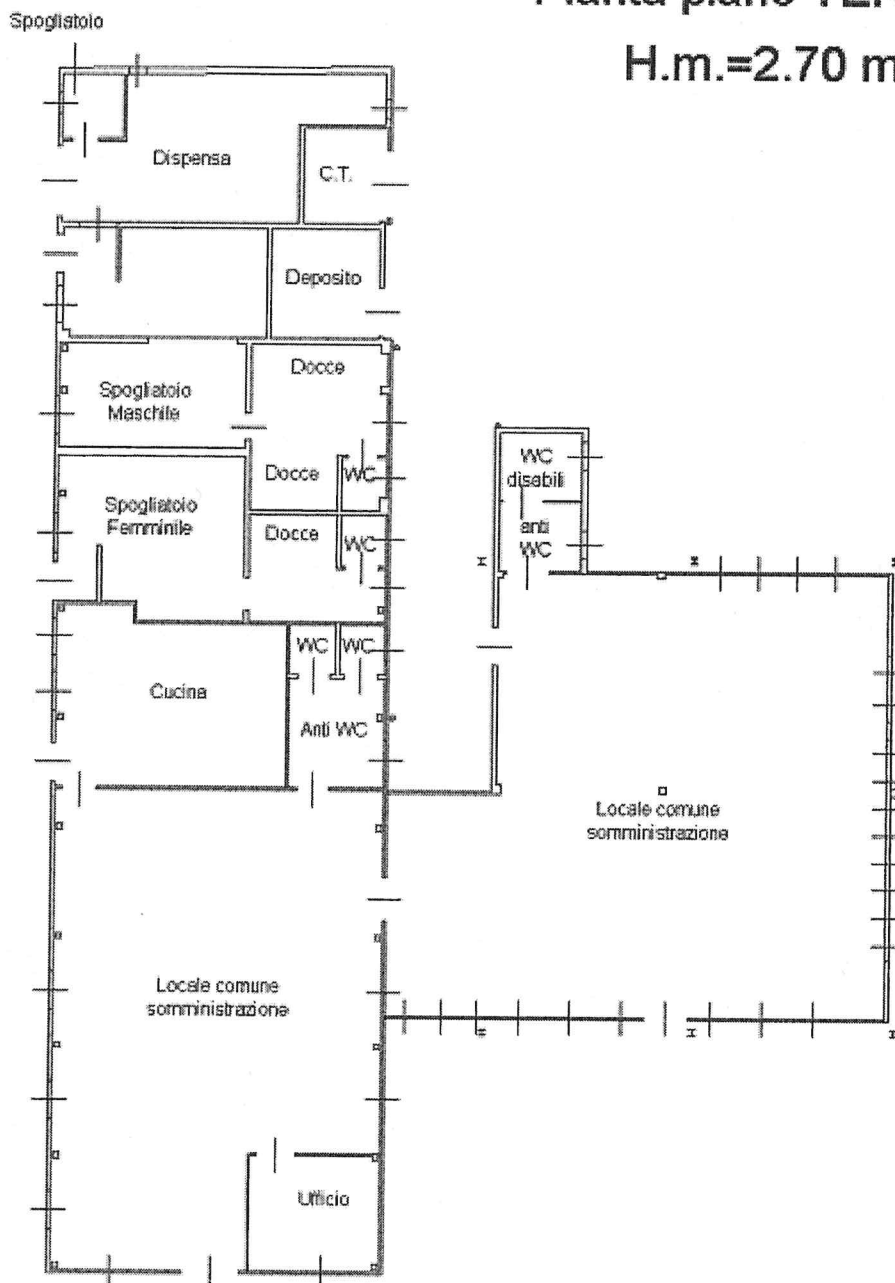


Estratto carta tecnica con dettaglio strutture edificate civico 57

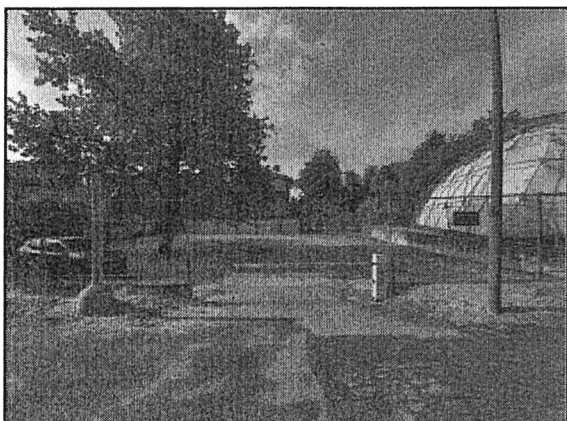
EDIFICIO PRINCIPANE n°1

Pianta piano TERRA

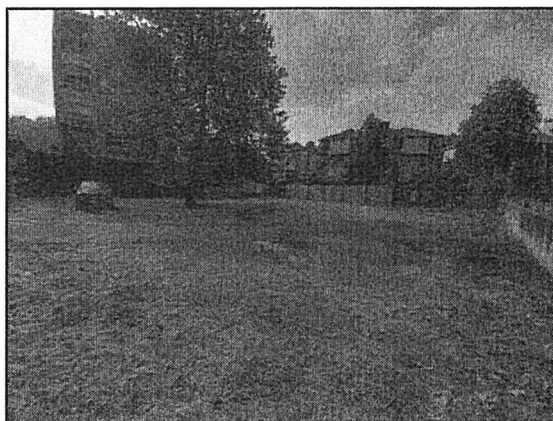
H.m.=2.70 m



Planimetria edificio principale civico 58/A



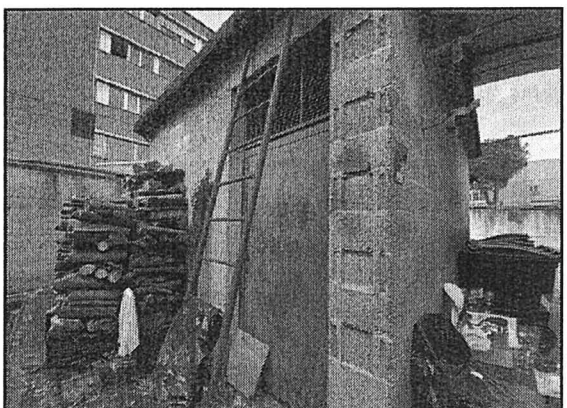
area parcheggio riservato ai soci al civico 57



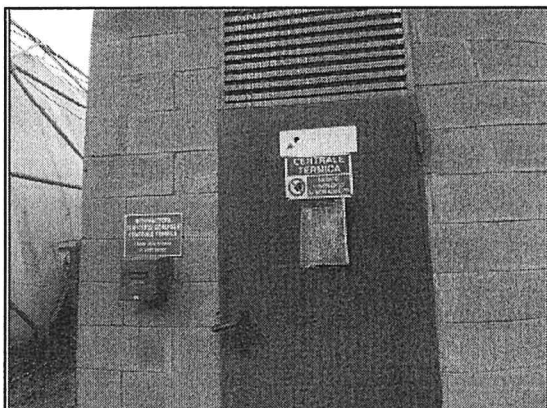
parcheggio lato strada



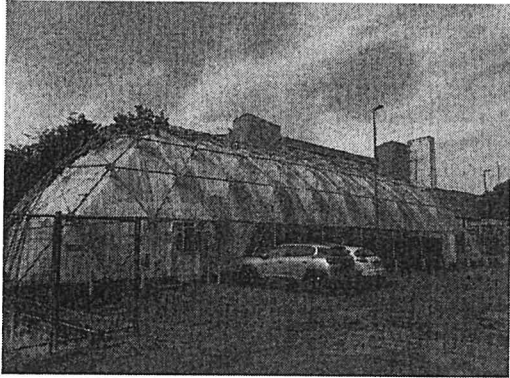
area libera



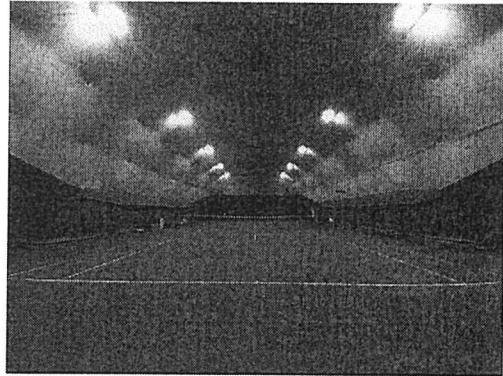
deposito



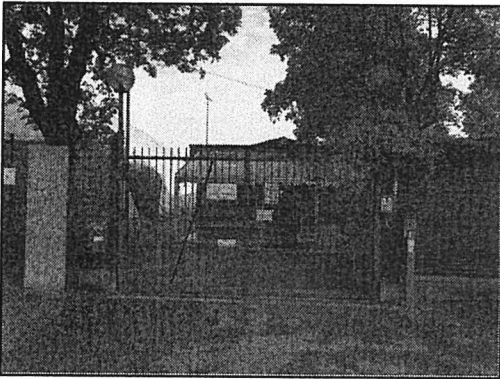
centrale termica



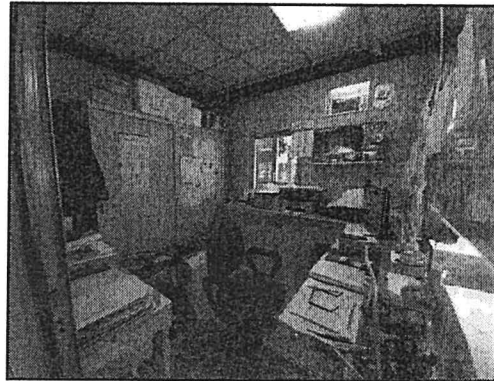
copertura campo da tennis con parcheggio



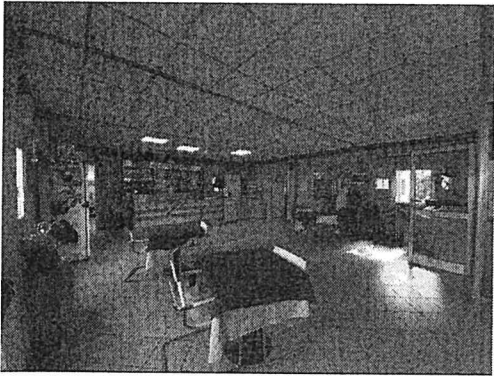
campo tennis coperto



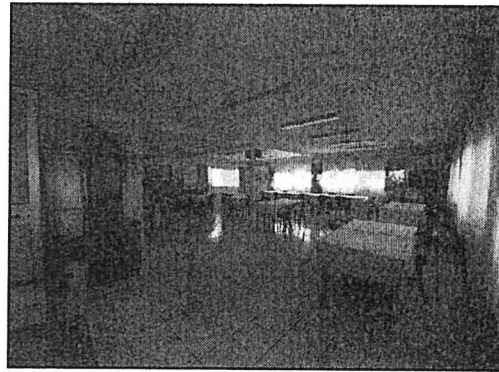
ingresso impianto civico 58/A



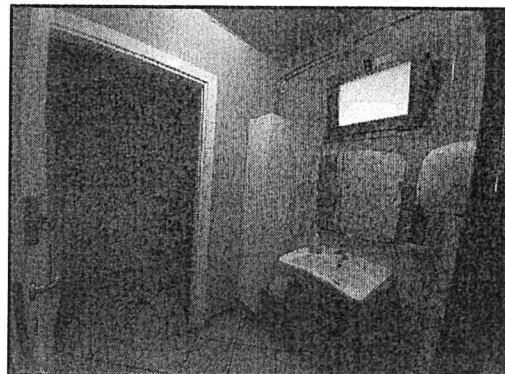
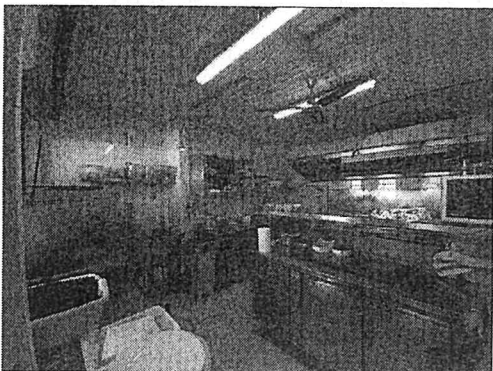
reception



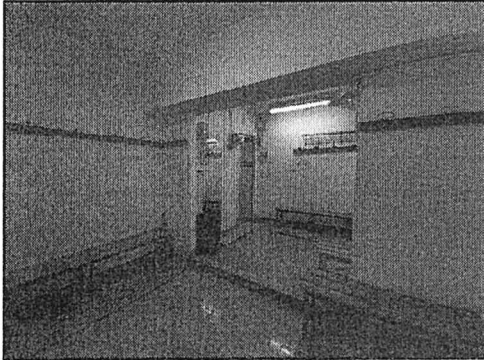
sala con bar



sala grande



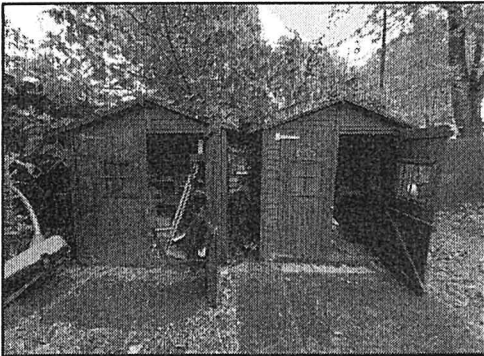
cucina



spogliatoio



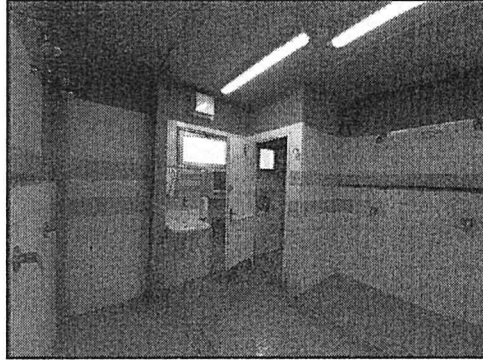
vista 2 container



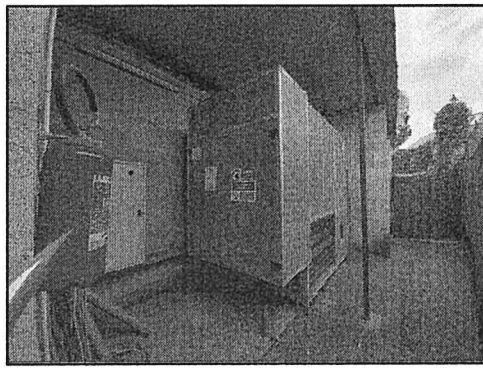
depositi in legno



servizio igienico disabili



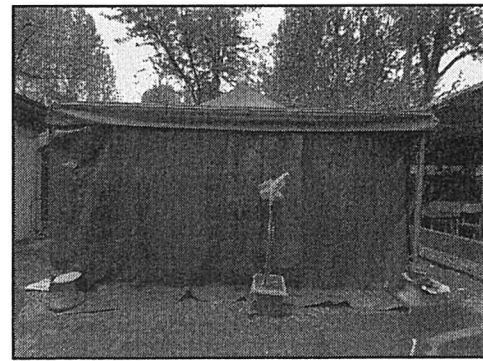
docce



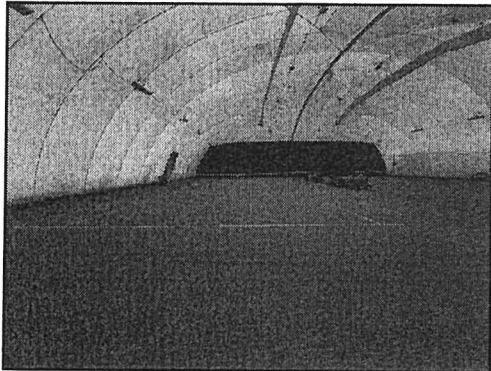
copertura generatore



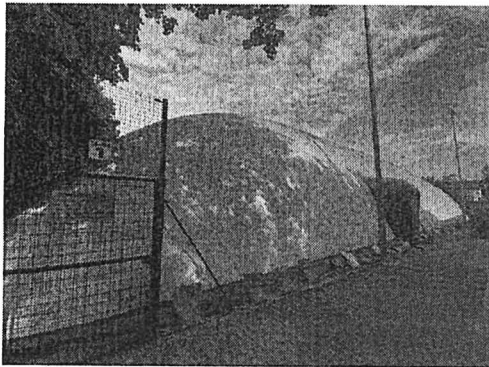
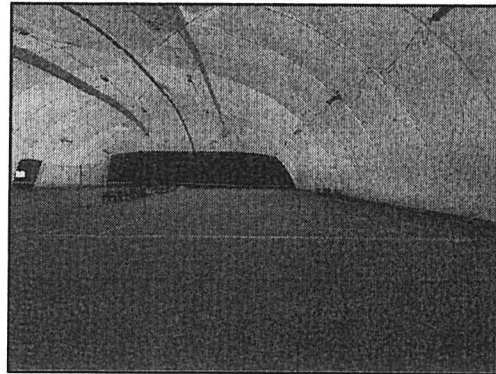
tettoia



tettoia



gazebo



vista dei 2 campi da tennis al civico 58/A con copertura

